



**FOR
LEASE**

COMMON AREA RENOVATIONS COMING 2020

PHYSICIANS PLAZA OF LEBANON

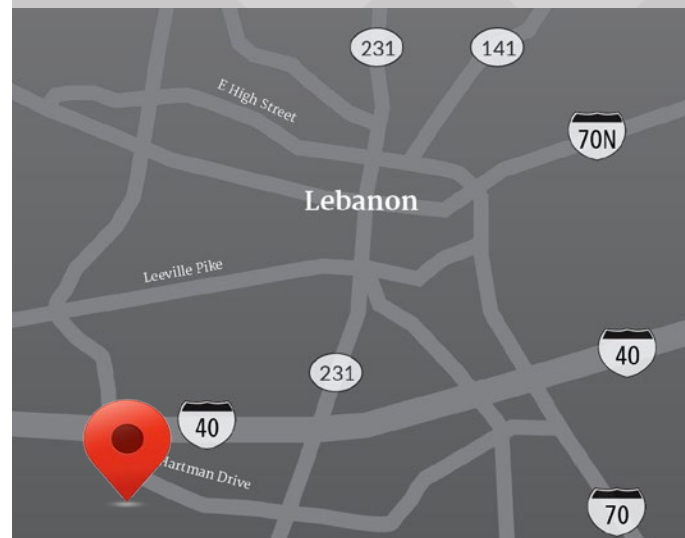
Property Features

- Physicians Plaza of Lebanon is conveniently located off Hartman Drive @ I-40 with Interstate visibility.
- Flexible lease terms- five (5) to ten (10) years
- Generous surface parking ratio 4.8 per 1000 SF
- 3,041 SF suite 270- in shell condition ready for custom build-out
- 6,915 SF suite 200- available with 11 offices, 3 restrooms, conference room, reception area, and large bull pen area
- 2,799 SF suite 210- available 2 offices, 4 exam rooms, waiting area, x-ray room, reception area, lab and nurse area, 2 restrooms, and break room.
- 2,345 SF suite 230- available with 5 exam rooms, 1 office, 1 restroom, reception area, and waiting area.

Building Address

100 Physicians Way
Lebanon, TN 37090

Great location right off interstate 40, serving the surrounding community of Lebanon, TN



www.lincolnharrishealthcare.com

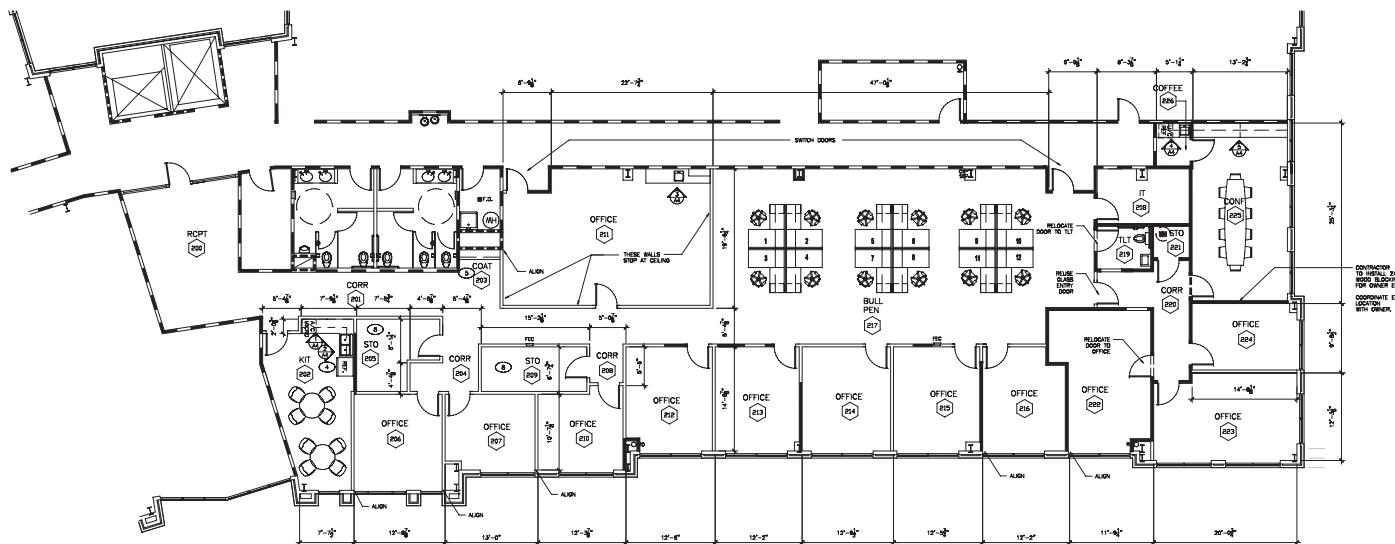
All information contained herein is from sources deemed reliable; however, no representation or warranty is made to the accuracy thereof.

FOR LEASING INFORMATION CONTACT:

Sarah Nelson
Lincoln Harris CSG
(615) 463-8600
snelson@lpc.com

FOR LEASE

Suite 200: 6,915 SF



www.lincolnharrishealthcare.com

All information contained herein is from sources deemed reliable; however, no representation or warranty is made to the accuracy thereof.

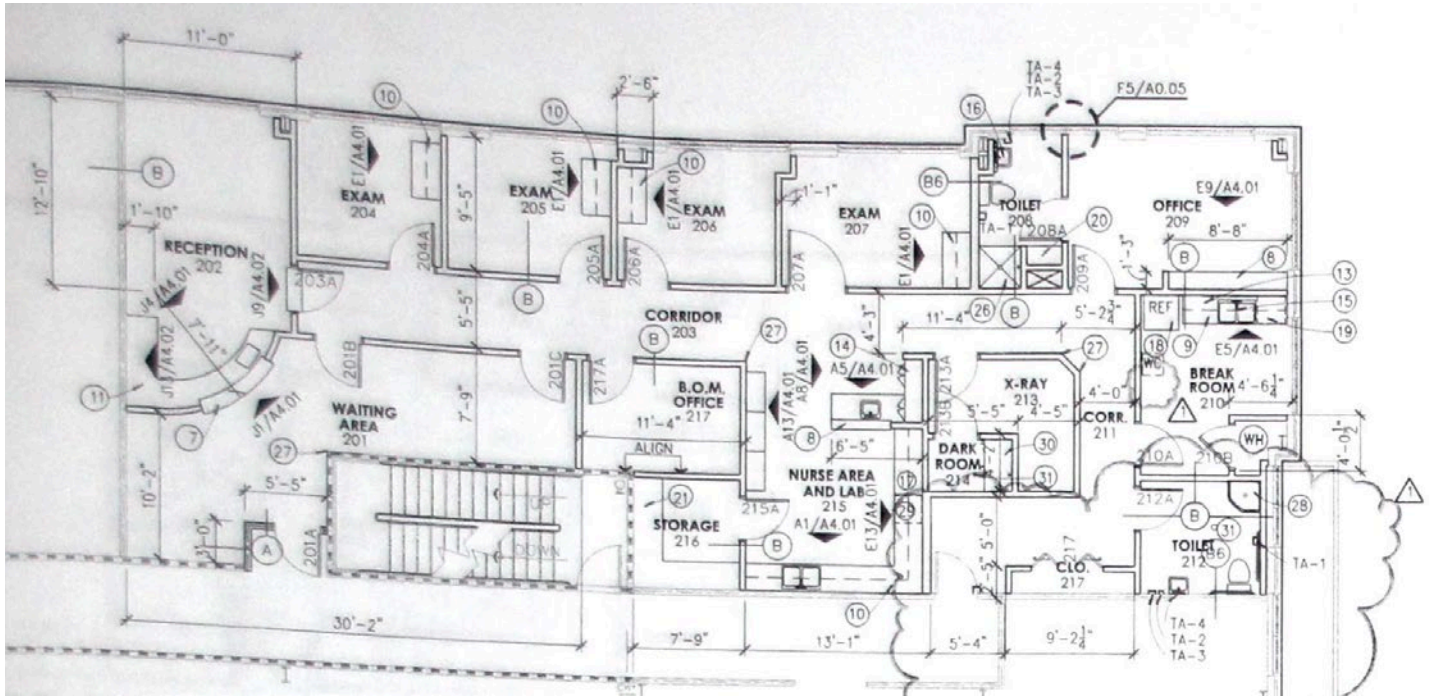
FOR LEASING INFORMATION CONTACT:

Sarah Nelson
Lincoln Harris CSG
(615) 463-8600
snelson@lpc.com

FOR LEASE

Suite 210:

2,799 SF



www.lincolnharrishealthcare.com

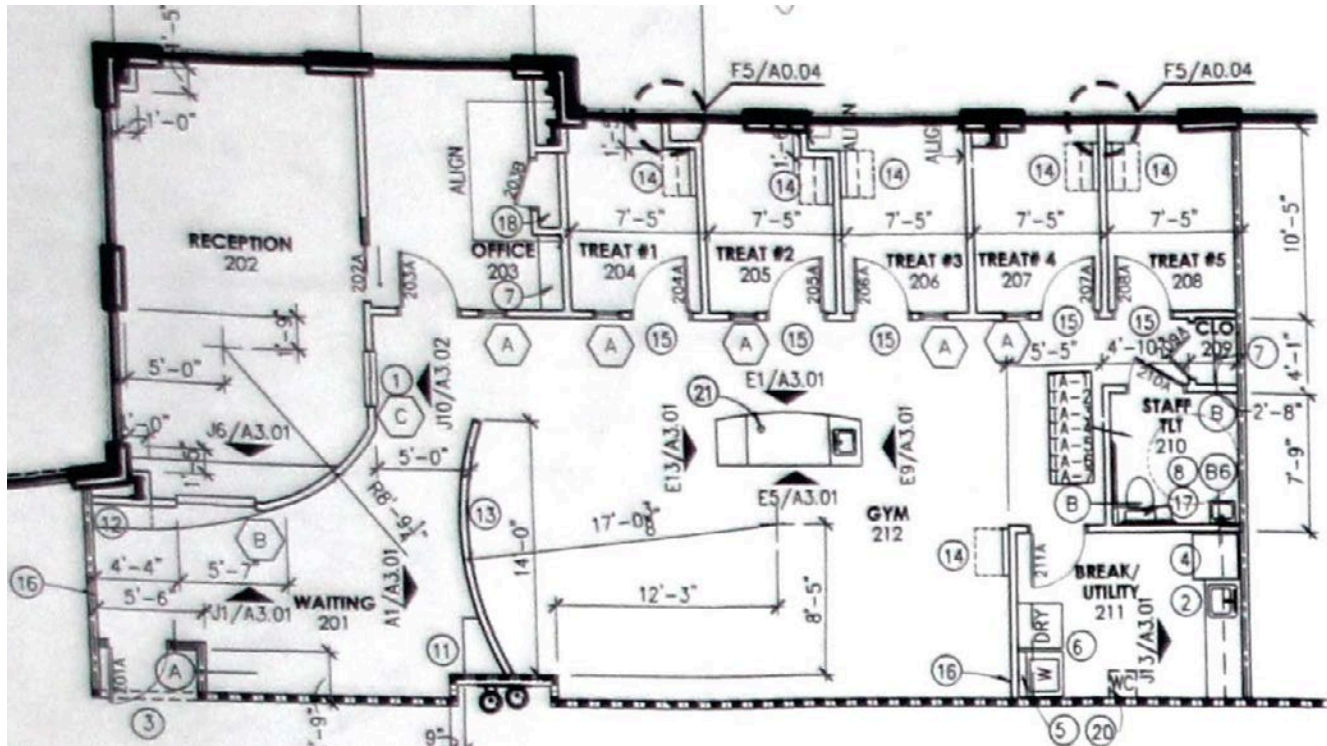
All information contained herein is from sources deemed reliable; however, no representation or warranty is made to the accuracy thereof.

FOR LEASING INFORMATION CONTACT:

Sarah Nelson
Lincoln Harris CSG
(615) 463-8600
snelson@lpc.com

FOR LEASE

Suite 230: 2,345 SF



**FOR
LEASE**

Suite 270:
3,041 SF



www.lincolnharrishealthcare.com

All information contained herein is from sources deemed reliable; however, no representation or warranty is made to the accuracy thereof.

**FOR LEASING
INFORMATION CONTACT:**

Sarah Nelson
Lincoln Harris CSG
(615) 463-8600
snelson@lpc.com