

**FOR  
LEASE**



# CALLOWAY CREEK MOB

## Property Features:

- Move in ready suites available
- Easy access to Highway 183 & Loop 820
- Tenant finish allowance available
- Free parking
- No use restrictions
- Excellent tenant mix to help grow your practice, including:  
Family Practice, Ophthalmologist, USMD, Orthopedics, & ASC

**Lease Rate:** \$26.50 Full Service

## Available Suites:

Suite 104: 2,273 RSF

Suites 203: 11,412 RSF

## Building Address

4300 City Point Drive N  
N Richland Hills, Texas 76180



[www.lincolnharrishealthcare.com](http://www.lincolnharrishealthcare.com)

All information contained herein is from sources deemed reliable; however, no representation or warranty is made to the accuracy thereof.

## FOR LEASING INFORMATION CONTACT:

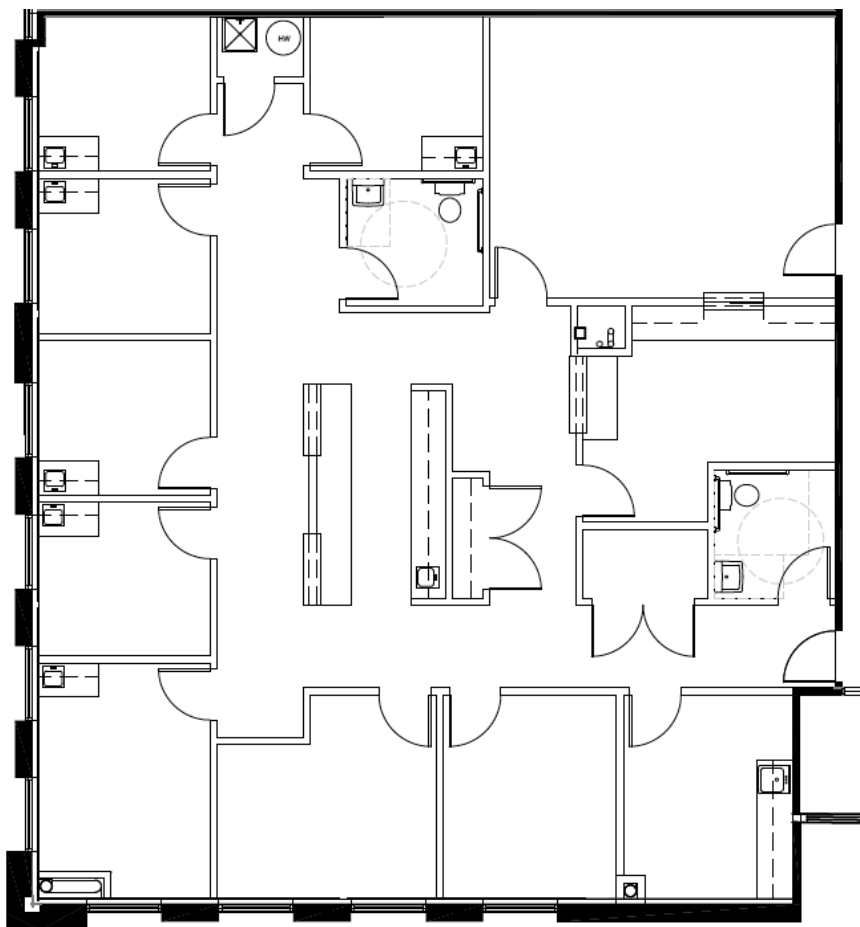
Holt Martin  
Lincoln Harris CSG  
M: 214-461-2383  
E: [hmartin@lpc.com](mailto:hmartin@lpc.com)

**FOR  
LEASE**

**Calloway Creek Medical Office Building**

4300 City Point Drive N  
N Richland Hills, Texas 76180

**Suite 104:** 2,273 RSF



[www.lincolnharrishealthcare.com](http://www.lincolnharrishealthcare.com)

All information contained herein is from sources deemed reliable; however, no representation or warranty is made to the accuracy thereof.

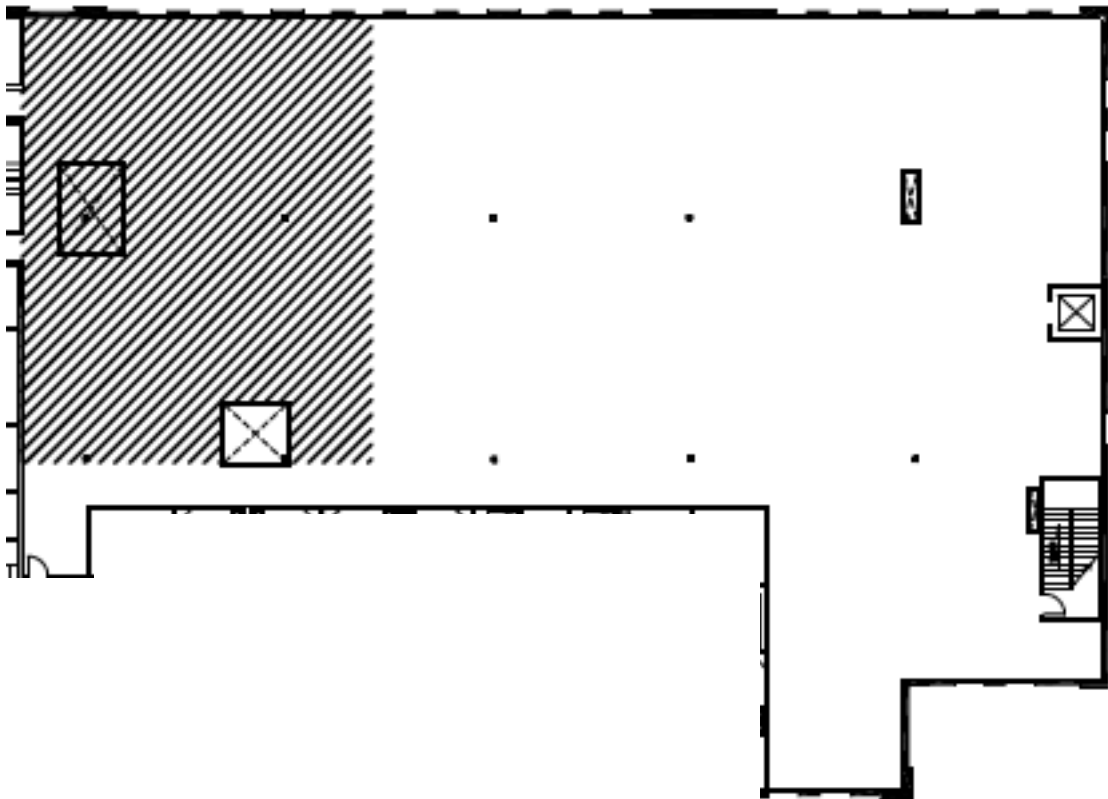
**FOR LEASING  
INFORMATION CONTACT:**

Holt Martin  
Lincoln Harris CSG  
M: 214-461-2383  
E: [hmartin@lpc.com](mailto:hmartin@lpc.com)

**FOR  
LEASE**

**Calloway Creek Medical Office Building**  
4300 City Point Drive N  
N Richland Hills, Texas 76180

**Suite 203 Shell:** 11,412 RSF



[www.lincolnharrishealthcare.com](http://www.lincolnharrishealthcare.com)

All information contained herein is from sources deemed reliable; however, no representation or warranty is made to the accuracy thereof.

**FOR LEASING  
INFORMATION CONTACT:**

Holt Martin  
Lincoln Harris CSG  
M: 214-461-2383  
E: [hmartin@lpc.com](mailto:hmartin@lpc.com)